

Product data sheet

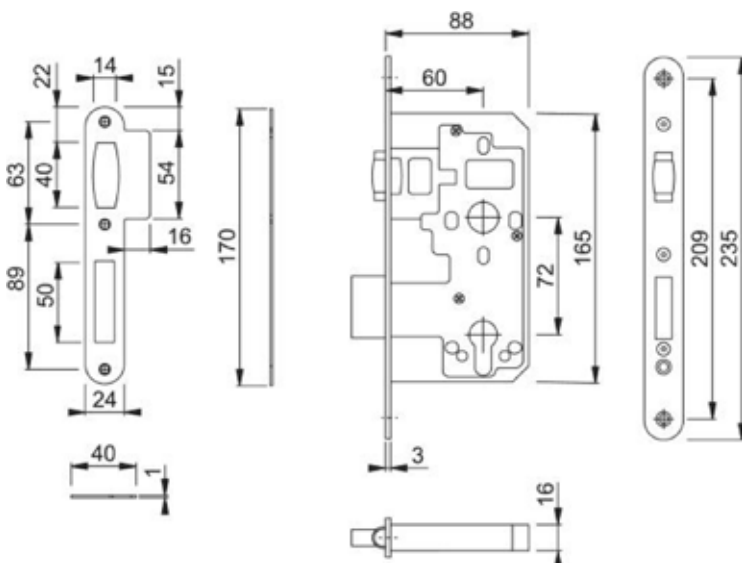
Mortice rollerbolt lock case

ESD916



Backset	60mm, pierced for furniture and escutcheons at 38mm centres
(Key) Hole size	Euro profile cylinder
Key hole distance	72mm
Door type	
Fixings	2 x 4, 5x25 pz, 3 x 3, 5x20 pz
Corner	Radius corners
Shape	Radiused
Finish	F69 satin stainless steel
Face plate finish	F69 satin stainless steel

- Function: roller bolt and deadbolt operation.
- Deadbolt projection: 21mm, single throw.
- Forend/strike material: stainless steel.
- Forend type: single.
- **BS EN 12209:** 3 | C | 8 | 1* | 0 | G | 4 | B | A | 0 | 0.
- Testing: **BS EN 1634-1.** Assessed for use on 30, 60, 90, 120 minute timber.



Drawing not to scale